

DERRY HILL AND
STUDLEY MATTERS

inSPIRE

May 2020

Special
Digital version



The Parish Magazine of Christ Church Derry Hill

wec

WILTS ELECTRICAL CONTRACTING Ltd

**FOR ALL YOUR ELECTRICAL, PLUMBING
& RENEWABLE REQUIREMENTS**

Electrical: Rewires, Alterations, LED Lighting, Test & Inspecting, Domestic, Commercial, Industrial & Agricultural

Plumbing: Refurbishment, Central Heating, Hot Water & General Repairs, Wood Burners & Flue Installations

Renewable: Solar PV & Battery Storage, Solar Hot Water, Air/Ground/Water Source Heat Pumps & Biomass Boilers

**Wilts Electrical Contracting Ltd,
10 Harris Road, Porte Marsh Ind Est, Calne, Wiltshire,
SN11 9PT, TEL: 01249 812850,
Email: enquiries@weclimited.co.uk**

www.weclimited.co.uk



MAGAZINE PRODUCTION TEAM

Editor	Richard Ayles	01249 814632
Assistant Editor	Richard Carter	01249 817926
Advertising Coordinator	Keith Treslove	01249 819077
Distribution Coordinators	Belinda Tanner	01249 449088
	Kevin Rowland	01249 320905
Webmaster/Composer	Ian Liddle	01249 816229

Please send articles and other correspondence to:

Mr Richard Ayles
1 Redhill Close
Derry Hill
CALNE

SN11 9NY

Tel: **01249 814632**

inspireeditor@outlook.com

Please send advertisement copy and related correspondence to:

Mr Keith Treslove
10 Bowood Close
Derry Hill
Calne

SN11 9QZ

Tel: **01249 819077**

inspirederry@gmail.com

EDITORIAL POLICY

Any opinions expressed in this publication are those of the individual writers and are not necessarily the policy of this publication or its editor. **All articles submitted for publication are subject to editing.** Deadline for inclusion of material in **next** month's magazine is the **10th** of **this** month.

ADVERTISING RATES

All rates are for insertion in **10** consecutive issues of **inSPIRE**.

Size	Grayscale	Colour	Approximate size of advert (Width by height) (cm)
¼ page	£60.00	£90	6 by 8
½ page	£120.00	£180	12 by 8 or 6 by 16
Full page	£240.00	£360	12 by 16

Printing by:

01249 823950
www.jamprint.co.uk





PRE-SCHOOL
Registered Charity 1030979

Lansdowne Village Hall, Derry Hill.

**Providing safe, high quality pre-school care
since 1987**

SESSIONS

Monday, Tuesday, Wednesday & Thursday:
9am – 3pm

Friday 'Rising Stars' for those starting school the
following September 12pm – 3pm
Forest Outings Wednesday 12pm – 3pm

A lovely environment with space to learn in a fun
way with our experienced and friendly team.
We welcome children from age 2 years old.

Visit our website for more information:

www.rubadubpreschool.com

Why not call us and arrange a visit on 07894
073865 – leave a message & someone will call you
back.

THE LANSDOWNE HALL
Petty Lane Derry Hill
Available for Hire

**Large Hall, 2 Meeting
Rooms and Kitchen**
Available for Hire

Preferential rates for local
residents
Derry Hill, Studley and Sandy
Lane

**For further information
and bookings**

07860 940323

www.lansdownehall.org

THE
LANSDOWNE
ARMS

**WHEN WE SEE EACH OTHER THERE'LL BE
JUST ONE THING TO SAY ...**

T: 01249 812422 E:Lansdownearms@wadworth.co.uk
W:www.lansdownearms@wadworth.co.uk

Editorial

We enter May, meteorologically the third and final month of Spring, in the strangest of times most of us have ever known with the coronavirus pandemic affecting the lives of all of us so dramatically. Who could have anticipated that a virus which was little more than a footnote in the news in a relatively unknown area of China whilst we were happily celebrating Christmas and New Year would come to dominate our news and change daily living for all in this country, and around the world, little more than three months later? The political, medical and social changes we have witnessed – and which are likely to continue for some time before any concept of normality returns – are truly remarkable.

This month sees two further Bank Holidays coming our way, the first of which occurs on Friday 8 May. The early May Bank Holiday was moved from its normal first Monday of the month slot this year in order to mark the 75th anniversary of VE Day (Victory in Europe – 8 May 1945 when German forces agreed to an unconditional surrender at Rheims in France) with three days of celebrations. The only time this Bank Holiday had been moved previously was in 1995 when the country marked the 50th anniversary. This country marks such events particularly well and with great respect so it is very sad that all the events associated with the day have been cancelled, though it is hoped that many may be moved to the weekend of 15-16 August when the 75th anniversary of VJ (Victory over Japan) will be marked. Let us hope that the health and social conditions later in the summer will allow these events to take place.

If conditions are eased, then it promises to be a bumper summer of sports and other cultural events which have been placed 'on hold' from earlier in the year pending any sort of relaxation. Sadly though, many stalwarts of our year have already fallen by the wayside, from Wimbledon to the Chelsea Flower Show via many others. But it is not just major national events which have had to be cancelled or postponed, many of the clubs, organisations and groups which form such an important part of the fabric of life in

our villages have been put on hold for the duration of the difficulties, as have many of the events which mark the calendar of village life.

On the plus side however, are the many examples of local people going out of the way to assist those in need or maintaining contact with those people who live alone or have trouble getting out and about. There is also a greater appreciation of those people who are 'key' - from those in the NHS and Social Care to supermarket workers, delivery drivers, teachers and refuse collectors. Perhaps we regard them (and many others not mentioned) with greater regard than we did previously for the contribution they make to our collective lives.

The Thursday evening round of applause acknowledging such workers has been particularly moving.



On a lighter note, this column always likes to mention the odd anniversary or unusual event and this month is no exception. One that has been cancelled and which will be a sad loss is National Doughnut Week which was scheduled to run 9-21 May – an event which raises money for the Children's Trust. It may appear a fairly recent event but 10 May 2010 saw the General Election which resulted in the Conservative/Liberal Democrat coalition being headed by David Cameron and Nick Clegg – how much water has passed under the political bridge in the ten years since then!

On 15 May 1940, the first McDonalds restaurant opened in San Bernardino in California – originally selling just hotdogs. Today there are 38,695 such establishments around the world with 1.9 million employees (direct or via franchises) serving 69 million customers each day. The first UK branch opened in 1974 in London. Like other such restaurants around the world they are all currently closed!

Something to look at on the internet. Try looking at the Salisbury Cathedral website and use the live link to view the peregrine falcons nesting high up in the Tower. After a gap of many years they have nested there every year apart from one since 2014. At the time of writing, the female is currently incubating four eggs which are scheduled to hatch early in May.

Keep safe.

Assistant Editor

Derry Hill and Studley Heartbeat

Good news – we have now bought the defibrillator for Studley Gardens (Bowood Gate) but the bad news is that by the time it got to us the Government Lockdown had been enforced so we have safely stored it

until we are able to install and commission it on the garage wall at No 21.

Rest assured in the meantime we will keep checking all the existing defibs on a monthly basis to make sure that there are always 4 available and in working order in the village – 2 in Derry Hill and 2 in Studley.

On a lighter note who would have thought that “I wouldn’t touch you with a six-foot bargepole” would become government policy.

Lastly remember: If you hold a wine glass in each hand then you can’t accidentally touch your face.

Many thanks

Julian (Chair) 01249 814145 / julian_oliver@btinternet.com



KINGSTON HOUSE

Lansdowne Crescent (East)
Derry Hill
CALNE SN11 9NT

We are a residential care home offering 46 en-suite bedrooms, fifteen in our specialist dementia unit

please contact us on:

01249 815555

Derry Hill Garden Services

- Garden Tidy Ups
- Hedge Cutting/Pruning
- Leaf Clearance
- Lawn Mowing
- Jet Washing – Patios
- Other Garden Jobs
- Gardening Gift Vouchers

Please contact David Jarvis:

Tel: 01249 815755

Mob: 07503 188630

david@derryhillgardenservices.co.uk

www.derryhillgardenservices.co.uk

The Baraka Catering Company Ltd.

www.barakacatering.co.uk



Catering for ALL events large & small
Delicious Homemade Canapés
Supper Parties
Gourmet Barbeques
Weddings, Birthdays
& Christenings

Please don't hesitate to call Camilla on **07734 251 075**
Or email camilla@barakacatering.co.uk
with any orders, questions etc.



**SRC
PLUMBING
&
HEATING**

**STEVE COWLEY
PLUMBING & HEATING
ENGINEER
DERRY HILL
CALNE**

Mob: 07795 836472

Tel: 01249 824787

The Abbey of Drogo's Fount

Loxwell Abbey had a short existence: Approximately three years from the actual moving in until it transferred a short distance north to Stanley. However, the name seemed to have stuck for some time after: The Sheriffs knew the brethren for at least 50 years as *'the monks of Chippenham in Locheswella'*. This in spite of the fact that they only stayed at Loxwell for three years, moving their home a mile northward in 1154 to Stanley in Bremhill, on the south side of the wide Marden valley, just within Pewsham Forest.



THE SEAL OF STANLEY

The Abbey at Loxwell is gone of course and nothing remains to view, as is the case with the magnificent monastic foundation of Stanley Abbey. To get an idea of how both might have been then go to Buckfast Abbey in Devon which was also destroyed by Henry VIII but was rebuilt in the early twentieth century from the foundations up to be as near an exact replica of the original built by Benedictine monks from France.

The spring at the former Loxwell Abbey though does make an appearance in the nineteenth century. In 1844 an Act of Parliament was created on behalf of the water company to take and use the water of Loxwell Spring.

And in the nineteenth century also an article appeared in the Bath Chronicle and Weekly Gazette Thursday 26 November 1822

"The Abbey at Lockswell, founded by the Empress Matilda and her son (afterwards King Henry II) before it was removed to Stanley, in the parish of Bremhill, was here situated. An examination of the original grants has now, for the first time, after so many centuries, established, beyond a doubt, the name and place of the first Abbey, where this remarkable spring, anciently called Drogonis fons, from Drogonis the Chamberlain (Cameranio) of Matilda, has its rise in the wildest part of the forest of Chippenham".

And near the end of the nineteenth century the writer and historian W.L. Bowles in his 'History of Chipenham', 1894 (J.J. Daniell)

"The Empress Maud granted to her Chamberlain, Drogo, certain land in Pewsham Forest. Drogo transferred the benefaction to a Cistercian brotherhood. On a hill in the Forest, a part of Drogo's gift, was a spring of the purest water, called "Lockswell," and the abbey which the monks built, bore the name of the " Abbey of Drogo's Fount," or " Drownfont." The water from this spring has flowed from time unknown, in a never failing, never varying volume of 150 gallons a minute.

It is a magnificent spring, rising on the very top of the hill, which is on all sides surrounded with wild and romantic scenery. It appears in the spot in which it bursts, nearly three feet broad, singular and beautiful, rushing into day, and then winding its precipitous and solitary way till it is lost among the wildest glades of the ancient forest of Chippenham ; once famous and hallowed, it has flowed for centuries through the wild bourne."

All is now gone. We have only the references, records, and historic observations of 'Loxwell Abbey'. But the landscape all around has a hidden reality of its own. We too and our village as it now is will one day be just an historic reference with nothing else remaining.

©Stephen Ben Cox

Colouring in time!



The Night Sky in May

For the third month in succession we have a supermoon to observe but one where the moon will not appear to be quite as bright or as large as April's since the moon will not be as close to Earth in its orbit as it was last month. May's event will take place on 7 May with the moon being closest to us at 11.45am.



The significant reduction in air pollution we have been experiencing since the restrictions imposed by the coronavirus pandemic has resulted in improved clarity in viewing the night sky, especially if your garden is no longer illuminated due to a dead street-light! It is worth taking a look at the skies, especially at those times of the month when the moon's light is not over-powering. It may mean venturing out a little later as the evening skies retain plenty of light at this time of the year.

Venus has been our companion in the night sky over recent months but will soon be leaving our evening skies as it approaches inferior conjunction – it will be in a line between Earth and the Sun meaning that it will be lost in the solar glare. This departure happens quite quickly – at the start of May it will set some four hours after sunset (towards the North-Western sky) but by month's end this is reduced to just thirty minutes after sunset. The planet will reappear in our skies in July but as a morning object.

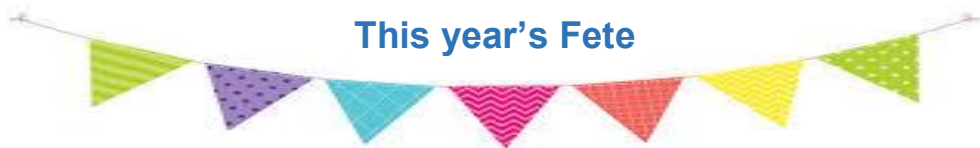
However, before it disappears opportunities arise towards the end of May when the planet will enable us to identify Mercury. On the evening of 21 May at around 21.45, low in the North West, Mercury will be immediately below Venus. The following day at the same time, it will be immediately to the left of the planet. The slim sliver of a crescent moon will also be nearby. Mercury should be visible with the naked eye, especially with these clearer skies but a pair of binoculars or small telescope might help.

For those insomniacs, at around 3.30am between 12-15 May it will be possible to see Jupiter, Saturn and Mars very close to the moon low in the South Eastern sky.

At the time of writing this piece there has been much press comment on the impending arrival into the inner solar system of a newly identified comet into our skies – Comet C-2019-Y4 Atlas, first identified via the University of Hawaii in December 2019. It may start to become visible towards the end of April and will be at its brightest, and rivalling Venus in brightness, towards the end of May. At its closest, it will pass about 72 million miles from Earth. Comets however have a habit of disappointing and it may not live up to the hype. It is also possible that it will break up as it nears the Sun. The best thing will be to keep an eye on press reports to see how things develop.

	Sunrise	Sunset
1 May	05.39	20.31
15 May	05.15	20.53
31 May	04.57	21.14

Richard Carter



Dear colleagues and fete supporters,
Perhaps you have been anticipating this?

It is with a massive sense of regret that I have to announce the fete, planned to be held at the Lansdowne Hall and school field on 11th July, is not going to go ahead in its normal form.

I choose my words carefully. We must remain hopeful in this extraordinary time that by early July some of the restrictions placed upon us will be lifted. If this proves to be the case the fete committee is determined to lay on some form of collective "Post Covid-19 Celebration" and so we ask you all to keep the date, time and location in your diaries and be prepared to work with us at very short notice to bring some joy and relief to our community. If 11th July proves to be too early, then we are committed to doing something just as soon as is practically allowed and we will keep you informed accordingly.

In the meantime, I hope you and yours remain safe and well and look forward to meeting you again on the other side – so to speak!

All the best

Peter Prater

YOGA

with Suzanne

Tuesday Night 8–9.30 pm Lansdowne Hall, Derry Hill

Tuesday & Thursday 10–11.30 am Lansdowne Hall, Derry Hill

Friday 9.30–11.00 am Lansdowne Hall, Derry Hill

Friday 11.30 am–1.00 pm Lansdowne Hall, Derry Hill

Suzanne Green email: info@yogawithsuzanne.co.uk
tel: 07732 545715 www.yogawithsuzanne.co.uk

MIXED ABILITY | BEGINNERS WELCOME

Tony Parsons
Domestic Appliance Repairs

Over 30 Years Experience
Washing Machines/Tumble Dryers
Electric Cookers/Dishwashers

Mobile: 07970117023



Wilkey Garden Machinery Services Limited

Established 2001

Stanley Bridge Farm, Chippenham, Wiltshire SN15 3RQ

John Wilkey, a skilled engineer with more than 30 years experience, specialising in the service and repair of all leading makes and models of garden machinery.

All enquiries welcome, call John on
07970 868824 / 01249 740358

john@wilkey.biz
collection and delivery service

Church Contacts CHRIST CHURCH - DERRY HILL

Vicar:
(Day off Monday.
Urgent calls only that day
please)

Reverend Linda Carter
The Vicarage,
Church Road, Derry Hill. **01249 817926**
Calne. SN11 9NN
lindac@mardenvale.org.uk

Lay Pastoral Assistants (LPAs)

Please call if you would like a visit or chat - all in strictest confidence

Mrs Averil Davis 01249 814411 Mrs Anita Uttley 01380 859433

Church Wardens

Mr Stephen Starr 01249 821325 Mr Peter Rigby 01225 704356

PCC Treasurer (Tr) & Secretary (Sec)

Mr Peter Roycroft (Tr) 01249 660550 Mrs Jennie Leddra (Sec) 01249 660550

*If you wish to discuss arrangements for Baptisms, Marriages, Funerals or would like a pastoral visit or meeting arranged then please contact
Reverend Linda Carter*

CHRIST CHURCH DERRY HILL - COVID-19

We are seeing a huge increase in the number of people falling sick with COVID-19. We must distance ourselves from one another and prevent the spread of infection in order to save lives. **Therefore, as well as public worship being suspended, Christ Church, Derry Hill and all church buildings in the Church of England are now closed**



Our worship of God and our care for each other continue but cannot be done in this building.

Our website contains details of how to join others online for prayer, worship, study, and community life.

See: www.mardenvale.org.uk

Here's the link for the weekly [Sunday Service](#)

You can also visit our Facebook page @christchurchdh

Rev'd Linda Carter can be contacted in an emergency by telephoning 01249 817926 or emailing lindac@mardenvale.org.uk

“Love the Lord your God with all your heart and with all your soul and with all your mind and with all your strength . . . Love your neighbour as yourself. There is no commandment greater than these.”

To protect the vulnerable amongst us, please do not leave your home except for essential trips.



Gardening Steve

Hi to you all, hope you are all staying safe during this difficult time. It seems very strange not seeing any visitors to Bowood at the moment. While I am writing this the tulips are looking very good, the trees are



beginning to come into leaf and the birds are singing well in the mornings. I look forward to seeing you all when Bowood opens again.

There is plenty to do in the garden now. The daffodils heads can now be cut down but leave the stems to die down naturally as this will put energy back into bulbs.

Stake the herbaceous plants now with pea sticks or you can use a frame with canes and string or netting.

Continue now with weekly mowing, you can adjust your mower to your desired height. Apply a broad leaf herbicide to the lawn to get rid of those unwanted weeds.



Towards the end of May, you can start putting out the bedding plants in the border when the danger of frost is passed. It's worth hardening them off before you plant them, this will mean that the plants get used to the outside.

Spray the roses fortnightly to control aphids and black spot and mildew. Spray early morning or late evening and choose a cloudy day if possible.

Hoe regularly through the borders, this will keep the weeds down also it will keep the soil in good condition. Preferably mulch the borders, this do the plants good.

Keep tying new shoots on clematis this will provide a good framework for flowers and will cover a good wall.

Have a nice time in your garden and stay safe everyone.

Stephen Starr – Bowood Gardener

Having difficulty shopping, picking up a prescription or even walking the dog?

Community Support for Derry Hill and Studley has been formed to help those who need help in these difficult times

If you are self-isolating and need help, we have four coordinators and a bank of twenty volunteers who can probably help you if you are vulnerable and self-isolating.

For help:

Email the dedicated email account: dhsfriend@gmail.com

Or

Ring one of our coordinators:

Carol Rigby 01225 704356

Ian Liddle 01249 816229

Richard Gribble 01249 812018

Richard Ayles 01249 814632



Also prayer support:

Prayer is an important part of our spiritual life and although the regular services are not taking place in church you can still pray at home and ask for prayer. If you have a particular prayer request you can ring Rev. Linda Carter 01249 817926 or email lindac@mardenvale.org.uk or one of the co-ordinators above and they will write out your prayer and put it on the prayer tree in church. Linda will use these in her daily prayers in church unless you wish it to be kept confidential.



April 2020



**4 COUNTIES
OIL TANKS**

SUPPLIED
& FITTED

**Call: 01666 510510
Mobile: 07966 690807**

THE VILLAGE STORES

Church Road, Derry Hill

**Village Shop and Post Office
Temporarily Closed**

When This Is Over



When this is over bird song will sound forever sweeter.
When this is over the sun will shine down so much brighter
When this is over please let's emerge softer and kinder,
When this is over children's laughter will ring out decibels lighter.

When this is over let's honour our 'unskilled' heroes with cash not claps.
And turn our backs on those that put their employees below the bottom line,
When this over you may find yourself on an altogether different path.
When this is over we must question those who said wash your hands
Everything's fine!

When this over call to account the selfish few, who would see untold numbers die.
When this is over remember that love should always conquer hate
When this is over knock on someone's door instead of sending a text
When this is over do not hide the truth under political rivalry cloaked in debate.

When this is over we shall all rejoice in the simplest of freedoms.
When this is over please hold my hand again in yours.
When this is over there will be thousands of memories worth keeping,
When this is over let Britain fall in love with the great outdoors.

When this is over the skies above will still be empty for a while.
When this is over our river and lake waters will run so crystal clear,
When this is over handmade gifts will be treasured more than gold
When this is over try to forget all the sadness that marked this year.

When this is over dead screens will sit gathering dust upon the ground.
When this is over hug your loved ones just that little bit tighter,
When this is over we remember those who have sacrificed their everything
When this is over lockdown will have created a bevy of bakers, painters and writers.

When this is over your perceptions may have changed.
When this is over the here and now will appear light years away.
When this is over things should not ever be the same.
When this is over may we learn from the mistakes humanity made today.
When this is over will you be able to look proudly in the mirror?
Or turn away in shame knowing your kindness was just cheap veneer?

Kirsty Braik Scivyer (nee Liddle) April 2020

Derry Hill Walking Netball

Unfortunately Walking Netball has been cancelled for approximately three months, following a directive from England Netball because of the Coronavirus situation. This is very sad as our sessions were being much enjoyed with the improving weather. We are being well supported by WI Walking Netball with ideas on keeping fit, some of which are on social media. So, let's all hope we can be back on the court in the late summer months. You can contact Barbara on 01249 814206.



Tina and Barbara

Dear Friends,

I am writing this on the Monday of Easter week, at the beginning of the Great Fifty Days of Eastertide. The Easter season lasts for fifty days culminating on the day of Pentecost, which falls on 31st May this year. For many, Easter was over by the end of the bank holiday and is certainly a dim and distant memory by now. In these extraordinary and testing times of the coronavirus pandemic it is difficult to know how things are now as you read this, especially as the number of people succumbing to Covid-19 is likely to be at its height.

Eastertide is meant to be a season of joyful celebration (if you have spent the forty days before Easter following a Lenten discipline of fasting, the contrast all the more striking and welcome). The character and content of the readings and liturgy of the church services during Eastertide encourages this sense of celebratory rejoicing and are intended to help us to explore and engage more fully with the message of Easter.



Most noticeable are the 'Alleluias' which, having been absent during Lent are now liberally distributed throughout each service (with a few extra thrown in by the vicar to keep you on your toes). 'Alleluia! Christ is risen. He is risen indeed. Alleluia!'

Also, the paschal or Easter candle, lit on Easter Day, is lit at every service throughout the Easter season, and is placed in a prominent position, usually near the altar. After the Day of Pentecost, the candle is moved to the font, and is lit for baptisms throughout the year. It is also lit for funerals and moved to stand by the coffin, to signify dying and rising with Christ.

The font too is significant. Having renewed our baptismal promises on Easter Day, the font is normally kept filled with water during Eastertide.



Another visual aid is the Easter Garden, with the stone rolled away and linen cloths in the tomb, the hillside with three empty crosses.

This year Ascension Day falls on 21st May.



This is when we remember how Jesus commissions his disciples to continue his work and promises the gift of the Holy Spirit, before ascending to his Father in heaven. The nine days (novena) between Ascension Day and Pentecost is for many Christians a time of prayerful waiting, in the same way that Jesus' disciples prayed together as they waited for the promised Holy Spirit to come.



And finally, the Day of Pentecost, when our fervent prayer is for a fresh outpouring of the Spirit on the Church and on all who follow Christ. Red (for the tongues of flame) is the liturgical colour, anointing with the oil of chrism (let's please do that some time?) where we pray "May the Holy Spirit fill you with the life of the risen Christ", and each of us lighting our own candles from the paschal candle, blessed and commissioned to dare to grow together in

love, to share our riches and minister to each other, to pray for one another and 'to carry the light of Christ into the world's dark places'.

The Pentecost service finishes outside the church building, signifying that we make Christ known out in the world through the power of the Holy Spirit, which is aflame within us.

As we cannot gather physically in church, we must continue to find other ways of exploring these mysteries, and I will endeavour to help

us to keep connected. Now, more than ever, I believe we need to make connections with the Easter message of hope and resurrection in our own lives, and fervently pray for the power of the Holy Spirit to bring healing out of brokenness, and light out of darkness.



With my love and prayers this Eastertide,
Linda

Mothers' Union Prayer & Fellowship Group

Having recently discovered Zoom I had wondered if we might set up a MU P&F Group meeting using this modern technology, but so far I've only got to the "I had wondered" stage! Hopefully it won't be too long before we can all meet up properly, but in the meantime I wish to share with you all the Mothers' Union Prayer.



Loving Lord, we thank you for your love so freely given to us all.
We pray for families around the world.
Bless the work of the Mothers' Union as we seek to share your love through the encouragement, strengthening and support of marriage and family life.
Empowered by your Spirit, may we be united in prayer and worship, and in love and service reach out as your hands across the world.
In Jesus' name. Amen.
Stay Safe everyone.
Barbara Parry

RSPCA help during COVID-19

The RSPCA has produced guidance to make sure people with animals are prepared.

Ensuring pet owners are prepared: The RSPCA has produced a [poster](#) that can be downloaded and filled in by members



of the public who have pets/animals. The aim being they will approach family/friends/neighbours who can care for their pets if they are hospitalised. This poster should be displayed in a visible place, for example on the fridge, etc so that the emergency services can see plans have already been made for the animals. Please do share this with the public in your community to try and help ease the pressure on the Adult Social Care teams in finding boarding spaces for animals.

Dog walking: [Guidance](#) has been produced on dog walking and we would strongly urge you to share this widely so that dog owners and all dog walkers are aware of it. It sets out sensible measures to ensure dogs can still be exercised with precautions taken for them and people. For example, all walkers should keep dogs on leads at this time - to help ensure social distancing, and avoid owners coming into contact with one another should they have to go and retrieve their dog or in the event of an incident as well as potential veterinary visit. Importantly it outlines information for those wishing to support key workers or those who are self-isolating or shielding by taking their pets out for a walk.

More about RSPCA advice for pet owners can be found [here](#)

(Extract from Wiltshire Council's 'Our Community Matters')

CALNE JAZZ CLUB

Postponed until August 25th:

James and Brig



MEADOWS

PLUMBING & HEATING

JAKE MEADOWS

M: 07840 577944 **E:** meadowsplumbingandheating@gmail.com

The Coach House, Stanley, Chippenham, Wiltshire SN15 3RG



Contemporary Eco-style Holiday Home To Let in Porthtowan, North Cornwall

Located in an Area of Outstanding Natural Beauty, “Ding Dong” is a 5 minute walk from Porthtowan’s beautiful sandy beach and stunning clifftop walks along the South West Coastal Path.

4 bedrooms, 3 bathrooms, sleeps 8
Perfect for families, surfers and walkers

For details contact Jennifer on 07770 945080 or jlamacraft@btinternet.com

The Derry Hill Florist .com

Hand Picked Just For You

Weddings - Funerals - Birthdays - Gifts

**Operating 7 days a week
for the convenience of our clients.**

07968 091217

 **facebook@thederryhillflorist**

 **WhatsApp**



**hidden
retreats**

Whether you're looking for adventure, a spot of romantic relaxation, or a family getaway, I will craft a tailor-made experience to the most beautiful and luxurious destinations across the globe. I can guide you through the myriad of destinations whilst providing recommendations to suit you individually. Bespoke Itineraries, amazing excursions, dining on the beach - no detail is unachievable.

Stuart Shimmin-Vincent

Personal Travel Advisor



0161 465 6006 | 0758 476 4495



stuart.shimminvincent@hiddenretreats.co.uk



facebook.com/hiddenretreatsbystuart

A great day out for all the Family

Experience one of the most exciting adventure playgrounds in the South West.
NEW for 2020 – The Den



FIND OUT MORE – BOWOOD.ORG
01249 812 102

BOWOOD HOUSE & GARDENS
WILTSHIRE, SN11 9NF



Derry Tots!

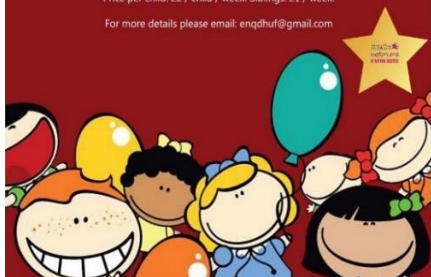
Derry Hill under 5's play group

Join us at the Derry Tots babies and toddler (under fives) playgroup, located at the Lansdowne Hall in Derry Hill village halfway between Calne & Chippenham

Every Wednesday during term time from 9:30 to 11:30 am.
From ages 0 - 5.

Price per child: £2 / child / week. Siblings: £1 / week.

For more details please email: enqdhu@gmail.com



Rachel's help at home

Passionate about providing a quality service



NVQ 2 qualified in care with 13 years
experience

Providing assistance with your daily routine,
including-

*Dressing *Meal preparation *Cleaning *Socialising
*Appointments and much more

Call Rachel on-
01249 813012 or 07599 374209

Would you like to advertise in colour in this slot for £90 a year? Then please contact

Mr Keith Treslove
Tel: **01249 819077**
inspirederry@gmail.com



Sunny Days
Children's Nursery

HOLIDAY CLUB
Flexible fun for your children

Book your space
sunnydays-nursery.co.uk
01249 815307



ACTIVE
PLUMBING
SUPPLIES



-  Plumbing & Heating Supplies
-  Boilers
-  Radiators
-  Solar Panels & other Green Technologies
-  Water Softeners & Salt



1 Stanier Road | Porte Marsh | Calne | SN11 9PX
www.plumbingsuppliestcalne.co.uk

01249 818811
Open: Mon - Friday 7.30am - 5pm & Sat 8am - 12pm

ACTIVE
KITCHENS | BATHROOMS
DOMESTIC APPLIANCES

-  Bathrooms, Wet Rooms & Shower Rooms
-  Bespoke Kitchens
-  Granite, Silestone & Laminate Worktops
-  Washing Machines and Dishwashers
-  Kitchen Appliances, Integrated or Freestanding



01249 813871
Open: Mon - Friday 8am - 5pm & Sat 8am - 2pm

Derry Hill C of E (VA) Primary School

Term four ended two weeks earlier than planned on Friday 20 March as a result of government action to deal with the coronavirus pandemic. This action was not unexpected and the school staff had already begun working hard to prepare the children and their parents for a period of



home schooling. Specific work tasks had been put together and individual class material posted for use via the school website. With the aid of modern technology these are updated frequently as the weeks of closure pass and the children and their parents have access to additional web-based material that they are familiar with. Such technology really comes into its own in circumstances such as this and it does of course maintain a valuable link between the school and the children. The last school newsletter included messages of support and encouragement from individual teachers to their classes and such communication will continue as we do our best to maintain links among the school community.

A Facebook page has also been established by one of the parents as a means of sharing ideas and support during this period of school closure and is proving to be very valuable. The school has remained open for a small number of children of designated keyworkers and is currently operating school hours between 9.00am and 3.00pm with staffing being carried out on a rota basis.

Unfortunately, the closure has forced the cancellation of all our planned school trips, class photographs and our Easter church service. In addition, the very successful run of the school football team has also had to come to a premature end. The school is working hard to support its children and their parents and maintain and foster links and support between everyone, but we do look forward to the day when we can re-open and return to normal school life. In the meantime, please enjoy Easter in these difficult times and keep yourselves safe.

Hayley Roberts, Headteacher

Fairtrade in Wiltshire

The Fairtrade Mark is your guarantee that a product has reached the minimum Fairtrade standards laid out by the Fairtrade Foundation.



Why do we need this guarantee?

Every day we use products from abroad which we import because they are not possible to be produced in this country. Some of these products are traded on the world markets as commodities and the system of world trade leaves the risk of prices falling with the producer. The producer is often the poorest person in the trading chain, so this is simply unfair. Just so we can have the cheapest price on the supermarket shelves some producers lack clean water, sanitation, education or healthcare.

Fairtrade is the attempt to balance out the inequalities in trading and provide a premium which can be used by a community to use on needs which they determine for themselves. When we met Patrick, the Fairtrade tea farmer who we hosted in Wiltshire for Fairtrade Fortnight, we discovered that despite all of his production being Fairtrade, he was only able to sell 3% on Fairtrade terms. This is because there is a flaw in the way the tea market operates.

The Wiltshire Fairtrade group was born out of *Agenda 21* an action plan of the United Nations with regard to sustainable development. It was a product of the Earth Summit (UN Conference on Environment and Development) held in Rio de Janeiro, Brazil, in 1992. The Wiltshire group was initially supported by the councils and used to meet at the Wiltshire Wildlife headquarters in Devizes. This group has spawned Fairtrade campaigns in Malmesbury, Corsham, Chippenham, Devizes, Warminster and Trowbridge. Bradford on Avon is one of the most successful towns and definitely the best place locally for ethical shopping.

When I first moved to Derry Hill the Calne group consisted of Traidcraft fairtraders and used to meet at my house. Many of these people are elderly now and it is much harder to be as active in the community. Some people may remember efforts in Derry Hill such as the annual Street Café outside my house and the Traidcraft stall in church. As you will read at the end of Stans' article, which is to follow, the Wiltshire Fairtrade group has decided to send funds directly to Patrick Kaberia

the tea farmer who we have built up a relationship with. This shows that the fairtrade system is just not adequate enough in his case, and we could not stand by without providing some charitable help. This brings into question the sustainability of fairtrade and the requirement that there has to be a market and people need to understand the pricing of products on the supermarket shelves. More than ever for the system to work we need to buy Fairtrade products.

Will Derry Hill and Studley ever become a Fairtrade Village?

We did try to include Derry Hill and Studley in the Calne Area Campaign, but this requires the main employers in the area to demonstrate their support. Now that the Calne is a fairtrade town, Derry Hill and Studley needs its own separate campaign group. If you are interested in getting involved please contact me.

Collect Som (colette_som@hotmail.com)

Calne Fairtrade this Easter

Fairtrade in Calne has taken a tumble with the sad loss of the Coop Food Store last weekend. The Coop was the foremost retailer of Fairtrade goods and support.

The Coop, their manager, Jackie Shackelford, and her staff have been wonderful and consistent supporters of Calne's Fairtrade Campaign. Calne Community Area Fairtrade Group has always had a Fairtrade



stall in the store during Fairtrade Fortnight, and more recently Jackie had produced some outstanding displays of their own (picture left). Furthermore, the Coop had been supplying the Community Hub with free Fairtrade tea and coffee which sadly will now cease.

On the upsides...

The Fairtrade Foundation have extended Calne's Fairtrade Town

renewal application date to August from March, giving us more time to complete the application due to the Coronavirus situation.

We were delighted to welcome Tesco to our Fairtrade Fortnight event on 5th March with their stall. We would like to thank their new manager Ashley Brooks for supporting the campaign in arranging this. We hope to see more support from Tesco in the coming year.

Kingsbury Green Academy had their Year 8 Fairtrade Day in February (before the lockdown) preceded by a Fairtrade Assembly which we lead and attended by the deputy Mayor Cllr. Rich Jones. See KGA Year 8's Fairtrade artwork at <http://www.calnefairtrade.org.uk/kgaart2020.html>

Across the World - Kenya

Some of the members of the wider Wiltshire Fairtrade group, have had some online video meetings (recorded) with Patrick Kaberia a Tea Farmer from Kenya, who came to our Fairtrade Fortnight Event in 2017 at Calne Town Hall – greeted by the then Mayor Cllr.



Tom Rounds (picture left). Patrick and his family are in lock down very much like us, except that their situation is far more precarious, yet we find them in good spirits more concerned about our welfare here – what an inspiration!

Stan Woods

Chairman – Calne Community Area Fairtrade Group
8th April 2020

Planting of the area between Chapel Street and the A4

You may already be aware that the area of grass running between Chapel Street and the A4 has been fenced off and planted. This area is the private property of the Derry Hill Management Company – the name given to the company that was formed by the developer of Chapel Street, CG Fry, and later handed to the owners of properties in the street.

At its most recent AGM, the shareholders in the company voted to have the area in question fenced and planted for a number of reasons not least of which include the desire to afford better sound-proofing, to provide habitat for wildlife, to reduce maintenance activities to preserve and enhance the cleanliness of the area and to protect the company's maintenance staff from some of the foul jobs they have had to deal with in recent years. The company sincerely hopes that in due course the beautification of the area will be seen as a benefit to all Derry Hill and Studley residents.



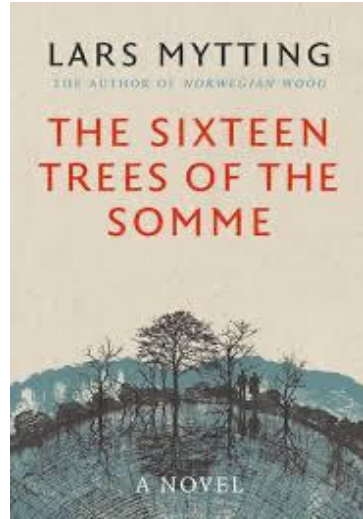
The Directors

Derry Hill Management Company (Chapel Street)

BOOK REVIEW

16 trees of the Somme by Lars Mytting ,

Written by a Norwegian author, Mytting transports us to a remote farm in Norway where the past and his parent's early death becomes the focus for the Novel. This is not a traditional war novel and we spend very little of the novel in that period. Instead the book focuses on relationships, identity and family secrets. For many of us it offered an insight into the aftermath of wartime experiences, what is said and unsaid, assumptions, perceptions and collective memory of the experience. How we punish ourselves and others for what we feel should have been and what we think has been.



We follow Evard on his journey to discover the truth about his family and the untimely death of his parents when he was an infant. As a result, we spend a significant amount of time in Shetland where the sea and the bleak landscape form a suitable backdrop to the harsh psychological impact of his parent's death on Evard. We are introduced to Gwen who has her own family secrets and questions and as their relationship develops, we wonder what games are being played and where the truth really lies.

Finally, we find our way to France where the meaning of the trees in the title becomes apparent and the scars of war are illuminated and many of the questions raised in the book are answered even if the answers are not fully understood.

We agreed this was an unusual and multi-layered book, well worth the read and perhaps a good way to spend time on during these weeks when we write our social and individual histories in a very different kind of war. How will we be remembered in our families and communities and how will our actions be interpreted 50 or 60 years from now?

Emir

Pam Ayres take on the Coronavirus

I'm normally a social girl
I love to meet my mates
But lately with the virus here
We can't go out the gates.

You see, we are the 'oldies' now
We need to stay inside
If they haven't seen us for a while
They'll think we've upped and died.

They'll never know the things we did
Before we got this old
There wasn't any Facebook
So not everything was told.

We may seem sweet old ladies
Who would never be uncouth
But we grew up in the 60s -
If you only knew the truth!

There was sex and drugs and rock 'n roll
The pill and miniskirts
We smoked, we drank, we partied
And were quite outrageous flirts.

Then we settled down, got married
And turned into someone's mum,
Somebody's wife, then nana,
Who on earth did we become?

We didn't mind the change of pace
Because our lives were full
But to bury us before we're dead
Is like a red rag to a bull!

So here you find me stuck inside
For four weeks, maybe more
I finally found myself again
Then I had to close the door!

It didn't really bother me
I'd while away the hour
I'd bake for all the family
But I've got no flaming flour!

Now Netflix is just wonderful
I like a gutsy thriller
I'm swooning over Idris
Or some random sexy killer.

At least I've got a stash of booze
For when I'm being idle
There's wine and whiskey, even gin
If I'm feeling suicidal!

So let's all drink to lockdown
To recovery and health
And hope this awful virus
Doesn't decimate our wealth.

We'll all get through the crisis
And be back to join our mates
Just hoping I'm not far too wide
To fit through the flaming gates!

Early years funding support



Wiltshire Council is offering an incentive scheme to cover the additional costs incurred by the early years providers who have remained open for vulnerable children and children of key workers.

In recognition of the challenges of continuing to provide childcare, the council will pay an additional £100 per eligible child, per week, to providers that have remained open since the beginning of April. Those settings that remain open during the COVID-19 pandemic are ensuring that key workers continue to provide critical services to communities whilst helping our most vulnerable children to receive a continuous education. Currently 25% of the settings are open and some may struggle to meet demand.

Settings that have remained open will have additional running costs and resources including additional cleaning and catering costs as well as bank holiday payments. These settings are not able to furlough staff part time and are also taking in additional children where necessary. To safeguard the sufficiency of the sector at this time all open settings will get 100% of their entitlement plus a further £100 per eligible child per week to offset the additional cost of staying open.

Cllr Philip Whitehead, Leader of Wiltshire Council, said: “We have looked very carefully at the incentive scheme to ensure that it supports early years providers that remain open.

“We know for some providers it was not possible to remain open and we are supporting those providers to access the government’s COVID-19 support package as well as receiving 80% of their Early Years Entitlement Funding for 2, 3 and 4-year olds. These changes will be introduced in June to help settings prepare. We will continue to review this situation and take into account any further announcements from the government.

“Thank you to all of our providers who remain open supporting our families and communities at this unprecedented time.”

Closed settings will receive 100% of their early year’s entitlement for the summer term in April and May with the intention of reconciling the 20% reduction for each of these months in June. This approach means they will have sufficient time to plan ahead and access government funding. In June settings which are closed will receive 40% of their funding entitlement. If any setting anticipates a financial hardship as a result of this proposal, they are encouraged to contact the council to discuss their situation.

John Proctor Chair of the Early Years Reference Group and Director of South Hills Nurseries which has 10 nurseries across Wiltshire, explained how the additional payments for those settings which remain open will help to meet the higher costs.

He said: “Some nurseries may be open and have days with four or five staff and only four children – or they may be staying open for just two children of key workers. These high staff children ratios need to be maintained in the interest of the children as some come with their own key worker from another setting, but the cost of this can be very expensive.

“This additional funding will help to pay for these additional costs and for any staff who may be travelling to another setting to ensure children can stay settled with staff they know. There are some nurseries where key workers have requested a place for their child but because there are only one or two children, they have decided it is not viable to open. Those that close will still have a grant and a waiver of business rates and receive additional government help to pay 80% their staff costs where needed.”

Settings which are closed are able to access the Government’s COVID 19 support package. This includes the Job Retention Scheme which childcare providers can access while continuing to be paid the Early Years Entitlement Funding via their local authority. Childminders can use the self-employment Income Support Scheme and claim a taxable grant worth 80% of their trading profits up to a maximum of £2,500 per month for the next three months.

(Extract from Wiltshire Council’s ‘Our Community Matters’)

While it's sharp in your mind...

You don't need me to remind you that we are travelling through strange and uncharted seas. How will we look back at this time? How will our children explain it to theirs?

These days at school and elsewhere, history is encouraged to be evidenced based, on poems, manuscripts, photos etc. What evidence trail will we leave behind? I suspect a huge montage of different media streams. What images will sum up these days we are living through?



The people out on the streets clapping, hilarious parodies, NHS staff in strange garb, queues outside supermarkets, empty streets and parks, the daily grim Number 10 briefings?

What are you missing? The social contact of clubs etc, going to the pubs and restaurants, on holiday?

Are you keeping a diary? Writing a poem or two? Taking photos on your daily walk? It would be great to collect these memories you have of this time to encapsulate what happened in our community.

When you are ready send them to me and I will collate them (photos, thoughts, observations et al) and somehow put them together, while they are fresh in our memories. If you are shy, they can be anonymous! I will dream up a prize for the best entry!

Editor (inspireeditor@outlook.com)

ON SOLITUDE

04.04.20

My life's been full, I've had my fun
I'm rich in many ways.
I've never needed to stop and think
Of how to fill my days.
There was no lack of things to do
Of people to go and see
And one special man I care about,
But now there's only me.
Because a plague has hit the earth
And man is dying fast
Self-isolation is the norm
And how long it will last
Is changing every single day
Until the virus peaks.
It could be months and I pray to God
That it will just be weeks,
Because I'm not cut out to be
A woman set apart.
I lay awake at night and fear
The dread that fills my heart.

The dawn breaks and I contemplate
Another lonely day.
Where every minute's like an hour
And time won't go away.
The streets are bare, no cars around,
It's like there's only me.



The occasional dog, being walked on a lead.
There's nothing else to see.
And then a sound, a beautiful sound
And I'm no longer alone.
A voice in my ear, that special man!
And I thank God for the phone.
But then he's gone and the silence descends
Twice as bleak as before.
And although I want to be positive
My confidence hits the floor.
I've got to be strong. I must survive.
And if God wills it so, it will be
And the world will begin to live again
No more solitude for me.

Averil Davis

The Lansdowne Hall: Coronavirus, COVID 19

The Hall's Management Committee have taken the decision to temporarily close the Lansdowne Hall from 21st March until such time as the restrictions on group gatherings are lifted. This decision was taken in line with Government instructions to ensure the safety and wellbeing of our staff, Committee Members and the local community who use the Hall.



When the time comes to re-open the Hall as much notice as possible will be given to our regular users so that they can again take up their pre-booked slots and to those who have reserved dates for later in the year. For those who are thinking of using the Hall for family celebrations or other one off events, once we are back to normal, please register your interest now with Richard French (ddtfrench@btinternet.com) or Alan Rosekilly (rosekilly@aol.com) who will bear your requirements in mind when updating the booking schedule. Meanwhile if you require further information about the Hall during these difficulties or are keen to assist us in some way please also contact us.

Richard French and Alan Rosekilly

News from the Wiltshire Bobby Van Trust

During the current lockdown we would like to notify you of the services still available through The Wiltshire Bobby Van Trust to those over 60 or 18+ with a registered disability.

Our team of Home Security Operators are still securing the homes of victims of house crime and domestic abuse. Our office team are on hand to give telephone support and advice on a range of home security issues. Please call 01380 861155 and leave a message, your call will be returned within a few hours during working hours. Our operators are also delivering Personal Protective Equipment for Wiltshire Police across the County.

Our team of Stay Safe Online volunteers are available to offer telephone advice on a range of issues from improving cyber security awareness, to cyber and scam prevention advice and signposting to future advice and resources. Please call and leave a message on 01380 861191 and someone will get back you shortly.

(Extract from Wiltshire Council's Community Matters)



Be cautious over cold callers

Scams over the phone are nothing new, but, in the current climate, they are being adapted. Criminals are exploiting the need to keep ourselves safe and take protective measures during the COVID19 pandemic so are reinventing their scams to use Coronavirus as a hook.

Any unsolicited phone calls should be treated with extreme caution, and if they're asking for payment details it's highly likely to be a scam.



Face masks, hand sanitiser and other protective products are in high demand, and fraudsters know this. We've also seen lots of activity online with many offering these products to lure people in, but the true reality is that they don't have these products and never will do - it's all a scam.

If you are looking to purchase these items, don't panic or rush. Do your research into who you are buying from and look for reviews, this can help determine whether it's a legitimate company or not. Most importantly though, never give payment or personal details during any unsolicited calls, emails or text messages.

If you think that you may have done, contact your bank immediately, change any passwords you may have divulged and report the incident to Action Fraud on 0300 123 2040 or online at www.actionfraud.police.uk

Sian Rivers (Police, Communications Officer, HQ)

Calne Without Parish Council

Thank you to all our residents for respecting the current advice and staying home, saving lives and protecting the NHS. The Parish Council is working to support all the fantastic volunteers in our community who are helping the vulnerable and those unable to get out during the Covid-19 emergency and is grateful to those who are continuing to work in the NHS, Care, Emergency Services, Schools, supermarkets and other essential services during this time.

Wiltshire Council are providing daily updates on their work and services and the Parish Council website www.calnewwithout-pc.gov.uk has contact details and the latest information.

Parish Councillors are available by phone or email if you have any issues. Click [here](#) for their contact details

Alternatively, [click here](#) for website contact page to send messages into the Clerk, who will always try to help.

Parish Council Meetings

Although the Parish Council cannot meet in its usual way during this emergency some decisions do still need to be made and these are reported on the website. Councillors are working to become experts on video meetings like so many of you during this period of social distancing and hope to be able to meet by video conference in May, more details will be posted nearer the time.

Funding and grants

Councillors are still interested to receive thoughts and ideas from residents about improvements that could be made to our community. So, if you have seen something on your daily exercise that you think could be improved or you are thinking about applying for funding for new equipment that your group or club needs when it starts back up again please let the Council know.

Planning

Planning applications are still being made and considered by Wiltshire Council. Those that the Parish Council is currently being consulted on are listed on the website with links to the plans on the Wiltshire Council website. [Click here to view.](#)

Community Governance Review

As one of its final meetings the Wiltshire Council Electoral Review Committee met on the 24th March to consider amongst other proposals, the Parish Council request to move properties between Pewsham and West Wards and the request for a new Derry Hill and Studley Parish Council. The minutes of the meeting have yet to be published but the webcast of the meeting is available, [click here to view](#).

The draft recommendation of the Committee in relation to Calne Without was to recommend approval of the change to the boundary between the West and Pewsham wards, and not recommend creation of a new parish at this time, but to conduct a later review which can include all surrounding parishes so all options may be properly considered.

The consultation on this recommendation may take place later in the summer when meetings will be able to be held, advice on this will be available when the situation is clearer.

Sarah Glen Parish Clerk

MOBILE LIBRARY VISITS TO DERRY HILL

Lansdowne Hall Derry Hill

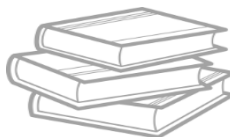
14.30 – 15.45

Tuesdays: 7th & 14th

Kiln House Derry Hill

10.10 – 10.30

Mondays: 13th April 2020



CLOSED UNTIL FURTHER NOTICE

Derry Hill War Memorial

Thursday 14 May 2020 sees the one hundredth anniversary of the dedication of the War Memorial located in Church Road in 1920. The dedication took place after an evening service in Christ Church.

The memorial was unveiled by Lady Lansdowne, Maud Evelyn Petty-Fitzmaurice who was the daughter of James Hamilton, the 1st Duke of Abercorn. She was born 17 December 1850 and died on 21 October 1932 and is buried in Derry Hill churchyard alongside her husband.



Deputy Editor

A comment from Lord Lansdowne:

When my Great Grandmother was unveiling the Derry Hill War Memorial one hundred years ago, how could she even have considered the possibility that there would be another World War with the further loss of millions of lives only thirty-four years later. Do we ever learn?

Today we face a different challenge. An insidious enemy. It could just be a wake-up call for us to pay more respect to our fragile planet. Will we listen?

Charlie Lansdowne

Derry Hill and District W.I.

Well, we are all living in a strange world at present, and the committee of the Derry Hill and District WI is working hard to try and keep our members connected. Tina, our President has been writing a newsletter to all our members since we have not been able to have a normal meeting and get together.



Before Easter we all had a challenge to make an Easter Bonnet, and send a picture of it to the Committee to decide on a winner. This was most successful, and on a “Zoom” Committee Meeting we decided that Robyn Summers was the winner.

In our latest newsletter, we have all been challenged to take a photograph entitled “Spring in our

Garden”. The letter also includes conundrums and some mathematical puzzles to keep our brains exercised.

One challenge we have in the near future is to all have a chat using a “zoom” meeting with twenty-four members! It should be fun when we all want to talk at the same time.

So, life goes on, and we can only hope it will not be too long before we can all meet up together. In the meantime stay safe, and if you would like to join in with our crazy fun WI, please contact Janet on 01249-814152 or email janet.baumber@btinternet.com

Barbara Barnard

Walkie Talkie initiative to support walking sports participants

Wiltshire Council’s sports development team has launched a session to support its walking sports participants during this difficult time.

The Walkie Talkie initiative allows participants from the weekly walking football, netball and rugby sessions throughout the county to phone in from home and have a conversation with each other in a group environment – maintaining the social-element that many of the members find so vital.

A walking netball participant said “Social interaction is hugely important to our overall wellbeing and now even more so with the current restrictions. Any way to try and maintain the friendships that have formed from being a part of the walking netball family is really important to us. To have access to a Walkie Talkie group is helpful and beneficial to so many people who may be socially isolated at this time”.

The walking sports sessions are part of Wiltshire Council’s adult participation work, which focuses on creating sustainable informal sporting activities. The sessions, which are delivered in partnership with the relevant national governing bodies, are adapted from traditional sports and take place at a slower pace, making them ideal for older participants, people recovering from an illness or injury, and



those who wish to take the first steps to a healthier lifestyle. They also provide a great way to socialise with other like-minded individuals and to meet new friends.

Cllr Allison Bucknell, Wiltshire Council Cabinet Member for Leisure and Communities, said: “Each walking sport session helps individuals physically, but is equally important when it comes to combatting social isolation.

“Examples of this include having coffee and a catch up before and after sessions, organising events and occasions for the group or going that extra mile to give confidence and support to a participant that has low self-esteem or has been through a recent bereavement.

“We want to ensure participants still have the opportunity to socialise with each other at this uncertain time even though it isn’t possible for people to be interacting face-to-face. The Walkie Talkie sessions allow the group to have a catch up much like they would have had on the side of a pitch or court.”

Wiltshire has more than 900 participants now signed up to weekly sessions across all sports, highlighting the success of the walking sports programmes across the county. The walking sports participants will also receive an interactive activity pack helping them to stay focused, active and creative from the comfort of their living room.

For more information on the Walkie Talkie sessions people should email sportsdevelopment@wiltshire.gov.uk

Wiltshire Council’s Active Communities online resources also provide support for people during this difficult time. The resource page covers a variety of topics, including the various library services available online – rhyme times, story times, e-books/magazines, resources on getting creative through mediums like song, dance, art and literature and opportunities to explore Wiltshire’s history. The complete list of resources can be found at <http://www.wiltshire.gov.uk/leisure-active-communities>

Wiltshire Council’s dedicated COVID-19 page can be found at <http://www.wiltshire.gov.uk/public-health-coronavirus>

(Extract from Wiltshire Council’s ‘Our Community Matters’)



Help be our eyes and ears to support the NHS and each other at this challenging time

Our job at Healthwatch Wiltshire is simple. We're here to help make health and social care work better for you. During this challenging time this role has never been more important.

Whether you are struggling to find the right health and care information, have an experience of care that services need to hear or if your care has been affected by the response to COVID-19 we want to hear from you.

The way health and social care services operate has been affected by coronavirus (COVID-19) with non-urgent treatment postponed, face-to-face appointments reduced and homes and services limiting public access.

You can help the NHS during these challenging times by letting us know how changes to services have affected health and social care in Wiltshire. By sharing your experiences of care – what's working and what could be better - you can help nurses, doctors and care workers spot issues that are affecting care for you and your loved ones.

As our opportunity to engage with Wiltshire residents is currently limited, and it's been necessary for us to [change the way we work](#), we would like to ask for the support of our community partners to understand the experiences of your customers, clients and members at this time.

Our request is for you to be our eyes and ears to help identify themes within the provision and delivery of health and social care services in Wiltshire.

This will help us to influence the development of services and make a positive difference for the residents you support and others.

Please share with us – either by phone or email – any insight or experiences that your members are talking about, or encourage them to contact us on 01225 434218 or info@healthwatchwiltshire.co.uk

For example:

- Information that is confusing or contradictory
- Services or initiatives that are working well
- Any gaps or barriers to accessing support

In return, we will share back with you any changes that occur or information we get.

Please share this email with your colleagues and contacts to help pass our message on.

Finally, as a trusted source of information, we invite you to like and share our social media pages.

- Facebook www.facebook.com/HealthwatchWiltshire
- Twitter twitter.com/HWWilts
- Instagram www.instagram.com/healthwatchwiltshire

For more information about us, please visit our website: www.healthwatchwiltshire.co.uk Here you will also find [advice and information](#) about the outbreak and a dedicated page detailing [local help and support available](#) across Wiltshire.

Thank you for your support. Stay safe.

Best wishes

Jo Woodsford

Volunteer and Partnerships Lead

Mobile: 07977 221661

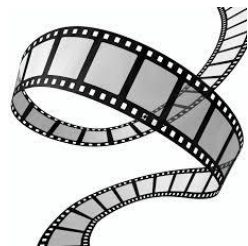
TOWN HALL MOVIOLA

Please note that there will be no more films showing up to and including July. We will look at the situation then with a view to coming back in September.

We will be back that is for certain.

Thank you all for your support.

Viv and the Team.



SHARE SOME LOVE TO THOSE WHO NEED IT MOST

The most vulnerable in our community need some extra support during these difficult times. Residents of our local care homes may not receive visitors and would therefore love to receive **letters, drawings and paintings** from children who are currently not at school, to help brighten their days.

The Bethesda Home

Church Road
Derry Hill
Calne
SN11 9NN

Kingston House Care Home

Lansdowne Crescent
Derry Hill
Calne
SN11 9NP

The Firs/The Lilacs

2 Lickhill Road
Calne
SN11 9DD

The Maltings Voyage Care

Brewers Lane
Calne
SN11 8EL

Goatacre Manor Care Centre

Goatacre
Nr Calne
SN11 9HY

Marden Court

Quarr Barton
Calne
SN11 0EE

PLEASE POST!

TO ENSURE THE RESIDENT'S SAFETY, PLEASE POST THE LETTERS DIRECTLY TO THE LISTED HOME ADDRESSES!

Public Health England (PHE) has advised that people receiving parcels are not at risk of contracting the coronavirus. From experience with other coronaviruses, we know that these types of viruses don't survive long on objects, such as letters or parcels. Further info: [royalmail.com/coronavirus](https://www.royalmail.com/coronavirus)



Kindly organised for the community of Calne, by Calne Town Council

The Bremhill Village Home Produce and Garden Show 2020

The produce show will be on **Saturday 5th September** this year.

The link to the schedule and class notes is here:

www.bremhill.com/show.

There are many things to keep you occupied during lock down, ready for the show - so get going now. And



encourage your children, grandchildren other family, friends and neighbours to start planting, painting, making things and planning their entries. Please print off extra copies for people who may not have printers and to pin to notice boards around the parish.

Still in lockdown in September? or a second lockdown?

Then we are planning to have a "VIRTUAL SHOW"

A challenge for the judges. Fewer classes and maybe some different ones. In the cooking section (presentation will be everything), a suggestion has been for a construction (biscuits or sponges) to look like one of the village halls or churches in the parish.

We would love to have more ideas from you just in case it is a virtual show.

All stay safe and enjoy gardening or making things

Marilyn Adcock

. Studley Methodist Church

Please see notice board for details of any activities.

Tina

Friends from Studley MC



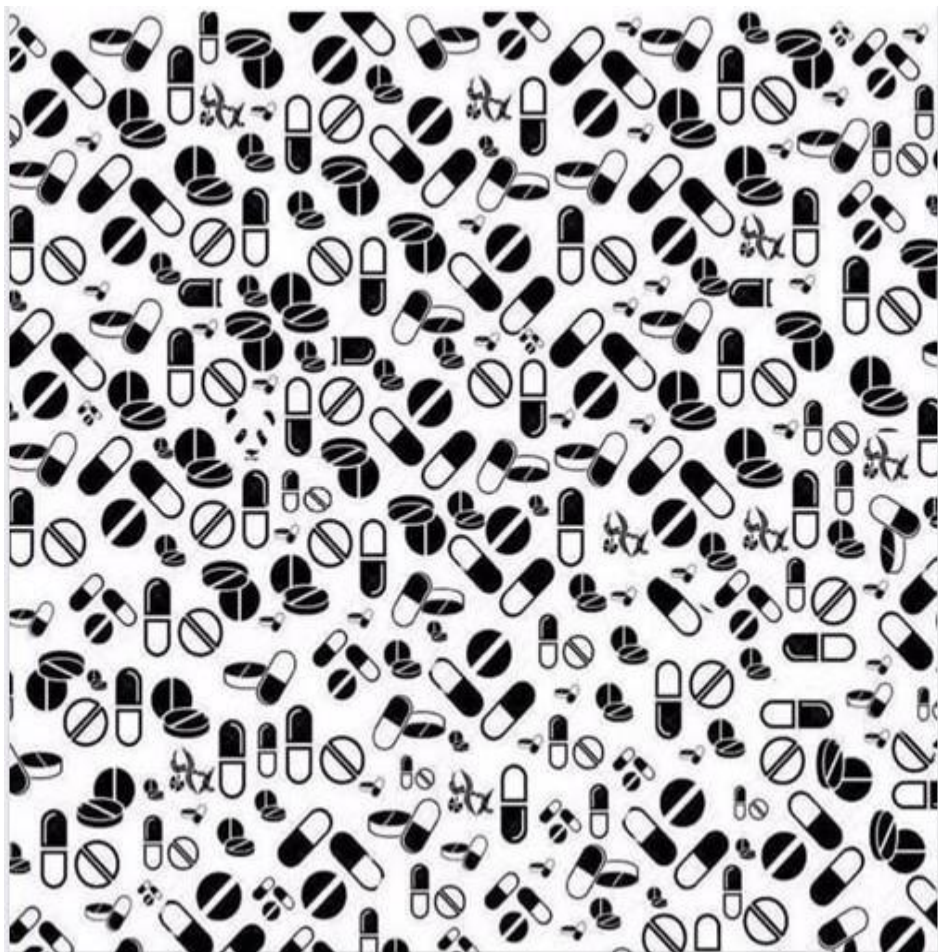
Coffee, Crafts & Chat

Unfortunately, this is postponed until further notice.

Shirley Mobile 07483 286009



Can you find the PANDA?



The Baraka Catering Company Ltd

Lasagne: - Fresh minced beef, peppers & mushrooms cooked in a rich tomato sauce layered with pasta & a mature cheddar sauce **£4.25**

Moussaka: - Fresh minced lamb, peppers & mushrooms cooked in a tomato & fresh oregano sauce, topped with sautéed aubergine & a rich cheese sauce **£4.50**

Shepherds' Pie: - Fresh Minced lamb, carrots & mushrooms bound together in a tomato sauce topped with a creamy mash parsnip & potato, sautéed leeks & cheese **£4.50**

Moroccan Spiced Lamb: - Tender chunks of lamb cooked with turmeric, cumin & Coriander with fresh tomatoes. Topped with crumbled feta & fresh parsley. **£5.00**

Pan-fried Pork & Apple: - Slices of pork fillet pan-fried with locally grown apples & mustard **£4.50**

Boeuf Bourguignon: - Tender chunks of beef cooked in a rich red wine stock with shallots, baby mushrooms, smoked Bacon & fresh thyme & rosemary **£4.50**

Steak & Kidney Pie: - A traditional recipe topped with puff pastry **£4.50**

Game Pie: - Mixed Local game cooked in red wine with fresh rosemary, shallots & apricots topped with a puff pastry **£5.00**

Chicken & Orange Tagine: - Chicken thighs cooked with a selection of North African spices, fresh coriander, parsley & orange juice **£4.50**

Chicken, Smoked Bacon & Leek Casserole topped with a Cheese & Herb Crumble: - Chicken breast cooked with smoked bacon, leeks in a white wine & thyme sauce topped with a crumble topping **£4.50**

Fish Pie: - Smoked Haddock, Salmon & Prawns in a White Wine & Cream Sauce on a Bed of spinach with a Cheese & chive au gratin **£5.00**

Aubergine Cannelloni: - Aubergine rolls filled with a rich ricotta & parmesan cream on a bed a fresh tomato & basil sauce **£4.50**

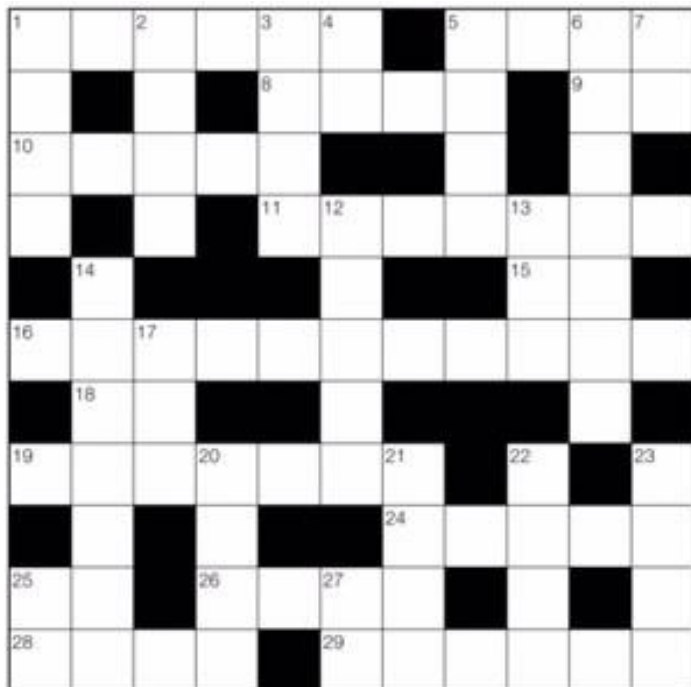
Mushroom, Spinach & Sun-dried Tomato Lasagne: - A selection of mushrooms cooked in a creamy sauce with sun dried tomatoes layered with baby spinach & lasagne. **£4.00**

Roasted Squash & Rosemary Pie: - Roasted Squash with a fresh rosemary, garlic & White Wine Sauce topped with Puff Pastry **£4.50**

Vegetable Rogan Josh: - Parsnips, Carrots, Peppers & Mushrooms cooked slowly with Spices & Tomatoes to make a rich tasty curry **£4.50**

All the above foods: - Last on average 3 months in the freezer, can be made and put into your own dishes, can be packaged in disposable tin foil containers. All made to order. We look forward to you ordering our delicious home-cooked foods and making your life easier.

CALL CAMILLA 07734251075 camilla@barakacatering.co.uk



25 Preposition (2)

27 Depart (2)

May 2020

Across

- 1 Risk
 5 And God created.. (4)
 8 A seeming eternity (4)
 9 To have existence (2)
 10 Hangman's halter (5)
 11 Pita filling (7)
 15 One (2)
 16 Public toilet (11)
 18 Yuri's yes (2)
 19 Luxury make (7)
 24 Unspecific (5)
 25 Short for 'thanks' (2)
 26 Barred enclosure (4)
 28 -- buco (veal meal) (4)
 29 Hawk family member (6)

Down

- 1 Make sharp (4)
 2 Kind of lens (4)
 3 Coral ridge (4)
 4 Act (2)
 5 ___ Minor (4)
 6 It makes the heart grow fonder (7)
 7 Personal pronoun (2)
 12 "___ Hall" (Woody Allen movie) (5)
 13 Air blower (3)
 14 Spanish grocery stores (7)
 17 Indian bread (3)
 20 Mexican snack (4)
 21 Designer ___ Saint Laurent (4)
 22 Thickening agent in foods (4)
 23 Depend (on) (4)

Some useful sites to help you pass the time at home

For the kids

[kidsactivities](#) Lots of ideas and resources for kids

[Childsfarm](#) Lots of ideas and resources for kids and colouring in sheets (Mum and Dad too??!)



Grown ups

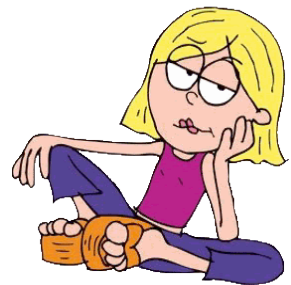
Some theatres are allowing you to watch one of their plays.

[The National Theatre](#) is streaming for free every Thursday 7.30pm for a week a succession of decent plays.

[The Hampstead Theatre](#) are putting on some cracking plays

[The Countryside Alliance](#) Have some Interesting articles for adults on countryside matters

Here is a massive bank of further information including virtual visits to museums from [Wiltshire Council](#)



Ed

Some useful links if you or someone you know needs some support

- [Age UK Wiltshire](https://www.ageukwiltshire.org.uk) telephone befriending service
enquiries@ageukwiltshire.org.uk or call 0808 196 2424
- [Independent Age Helpline](https://www.independentagehelpline.org.uk) 0800 319 6789
- [Silver Line](https://www.silverline.org.uk) 24/7 telephone support service for older people
- [Scope](https://www.scope.org.uk) offers befriending to parents and carers of children and adults with disabilities
- [British Lung Foundation](https://www.britishlungfoundation.org.uk) listening ear service
- [Macmillan Cancer Care](https://www.macmillan.org.uk) helpline 0808 808 00 00, 7 days a week, 9am to 5pm
- [Macular Society](https://www.macularsociety.org.uk) telephone befriending service 0300 3030 111
- [Samaritans](https://www.samaritans.org.uk) 116 123
- [CALM](https://www.calm.org.uk) Helpline for men open 5pm to midnight seven days a week. National number: 0800 58 58 58
- [Mens Health Forum](https://www.menshealthforum.org.uk) 020 7922 7908
- [No Panic](https://www.nopaniceurope.com) helpline for young people 0300 606 1174
- [Action for Happiness](https://www.actionforhappiness.org.uk) monthly coping calendar to help you through the current crisis.





H.F. STILES & SON LTD

Fourth generation family butchers
Retail butchers established over a century

**Beef, Pork and Lamb sourced from local farms and slaughtered at
our own abattoir ensuring that we know exactly where your meat
comes from**

All beef hung and matured for 3 weeks

This months special offer – only £35

3 lb Loin of Pork Roasting Joints or Pork Steaks
1 Whole Chicken or Chicken portions
2 x 1lb Minced Beef
10 Homemade Traditional Pork sausages
2 x 8oz Sirloin Steaks

An average of only £1.35 per meal

All packed and labelled to your requirements
If you would like anything packed or butchered differently then please
ask and we will be more than happy to help

Please phone with any orders or enquiries that you may have and to find
out about our weekly delivery service

Opening Times

Monday:	8am – 1pm
Tuesday – Friday:	8am – 5pm (closed between 1pm and 2pm)
Saturday:	8am – 1pm

22 High Street, Bromham, Chippenham,
Wiltshire, SN15 2EX

Telephone: (01380) 850342

BRIGNALL OPTICIANS

OPTOMETRISTS & CONTACT LENS PRACTITIONERS
VARILUX SPECIALIST

Proud to be Independent

**Providing quality eyecare
and a range of frames
to suit all budgets**

Book an appointment on

01249 653292

21st century equipment with
old fashioned customer service

33 New Road Chippenham

Electrical M.A.N Ltd.
Domestic Installer



Qualified electrician
with 16 years
experience.

- Full rewires
- Consumer unit changes
- Testing & inspections
- Free quotations



07392751164

www.electrical-man.co.uk

mark@electrical-man.co.uk

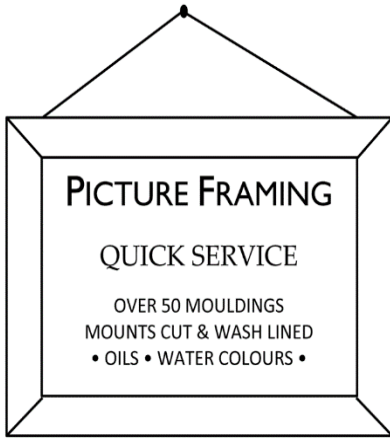
**Start the
week with a
clear mind**

Join The Meditation Group
10 am Mondays
in Old Derry Hill

07941 205289

suzanneaskham.com





Please Ring: Juliet Wilmot
The Garden Barn
Chittoe, Chippenham
SN15 2EW
Tel. 01380 850314

FALCON BUILDING CONSULTANTS

Architectural Services

**Planning and Building Regulation
Drawings and Applications**

Over 30 years' experience

Kevin Vines

07774 945251 – 01249 817814

kevin@falconbuildingconsultants.co.uk

www.falconbuildingconsultants.co.uk

FLOODLIGHTING THE SPIRE

This is a lovely thing to do to remember loved ones and to celebrate special anniversaries and birthdays. The Spire is currently lit between 7pm and midnight, though this varies with the time of year.

Floodlighting the Spire can be arranged through **Reverend Linda Carter**, The Vicarage, Church Road, Derry Hill. Calne. SN11 9NN
lindac@mardenvale.org.uk

A donation to the church for the cost of the lighting is welcome.

ALTAR GUILD

Flowers in Church: The Flower Guild are inviting flower sponsorship for the single pedestal in Christ Church, Derry Hill each week. If you would like to do this or sponsor part of a pedestal, in memory of a special occasion then, to find out more contact Claire Satchell, on **07968 091217** or email newleaffloristry@hotmail.co.uk



RCVS
ACCREDITED
PRACTICE



The Best of Care
whenever you need us

01380
728505

24hr Emergency Service
and On-site Intensive
Nursing Care



Hopton Park, SN10 2GH
Last on the left as you leave
town on the Swindon A361

Easy step-free access
and ample parking

You will never have to
travel anywhere else for
out-of-hours care. We
also offer home visits
when needed.



Find out all about us! www.macqueenvets.com

 and we're on Facebook!
facebook.com/macqueenvets

Office Hours
Mon - Fri 8:30am - 7pm
Saturday 9am - 5pm

Golden
Charter



Odette Dip FD
Funeral Director
Independent Family Run Business

Serving Calne and her surrounding community
for over 20 years.

Odette is Calne's only qualified and independent Funeral
Director offering support and advice 24 hours a day,
7 days a week.

She will provide you with a personal bespoke service
for funerals, pre-paid plans and stone memorial
masonry.

You're In
Safe Hands



7 Phelps Parade
Calne
SN11 0HA
01249 819972



www.odettefuneraldirector.co.uk



